

# WIND RIVER BUILT

2023-24 Park Model Catalog



# THE CUMBERLAND

---



**45ft**

Modern  
tiny home

**6 people**

Sleeps  
up to

**MSRP: \$148,000**

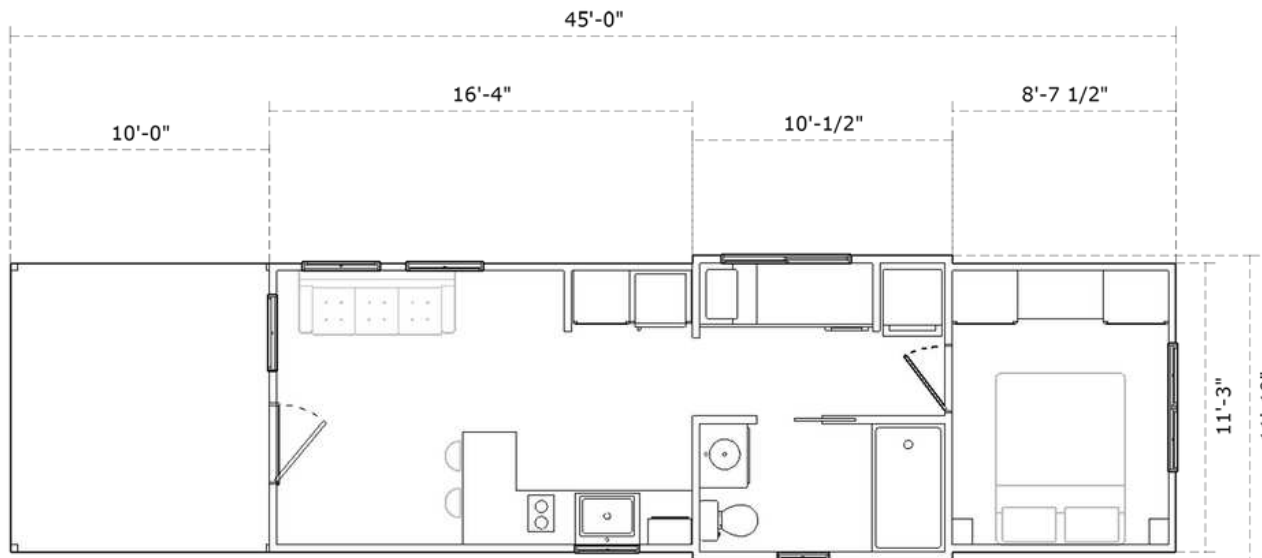
\*Volume discounts  
available



# THE CUMBERLAND

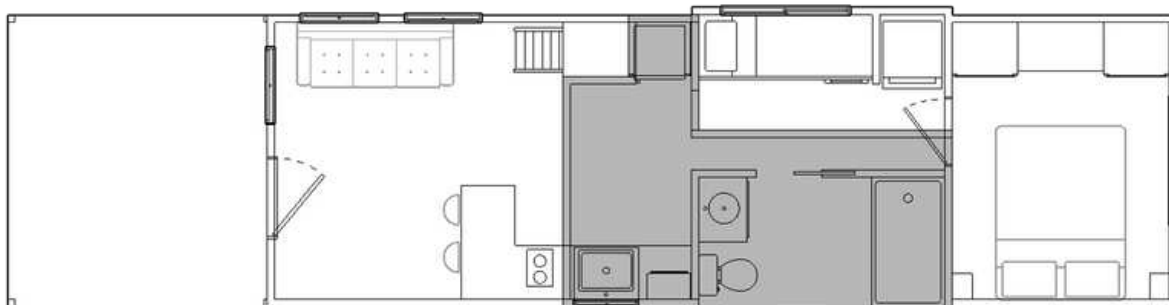
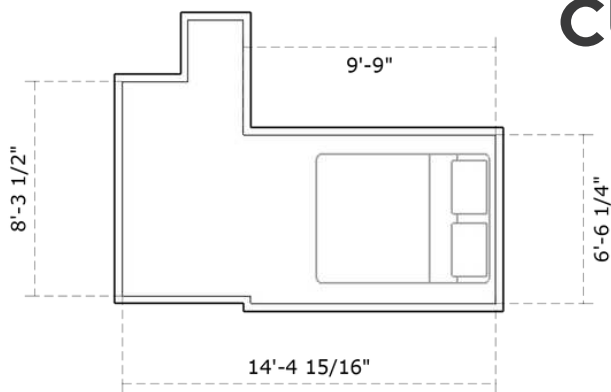
35 ft park model tiny home with 10 ft integrated porch.  
Certified Park Model RV.

The Cumberland Park Model is a classic single-level design featuring an open living area and kitchen, bunk beds, bedroom, full bath, and laundry area—add an additional sleeping area with the Cumberland + Loft model. The 10' integrated porch provides covered entry and extends the living area outside. Offering the same comforts and ease of home in a more compact design, the Cumberland is an ideal retreat for families.



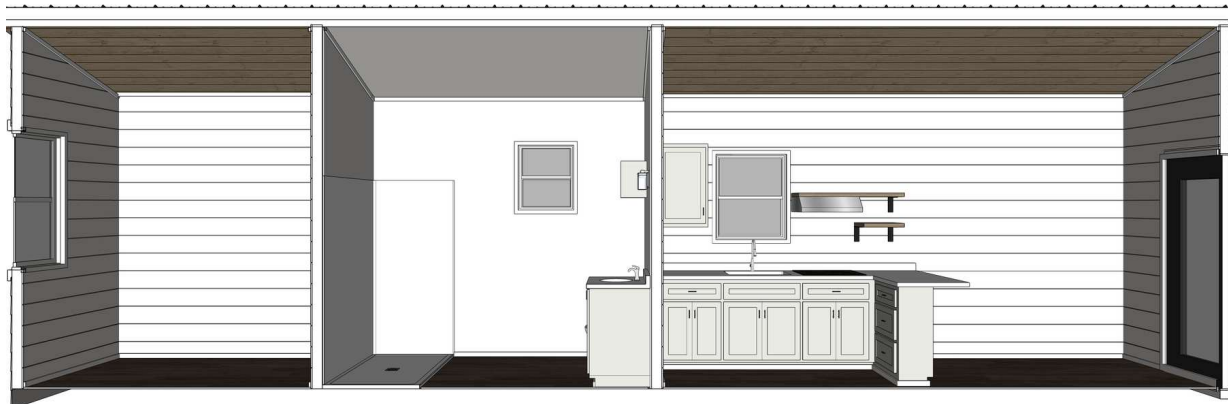
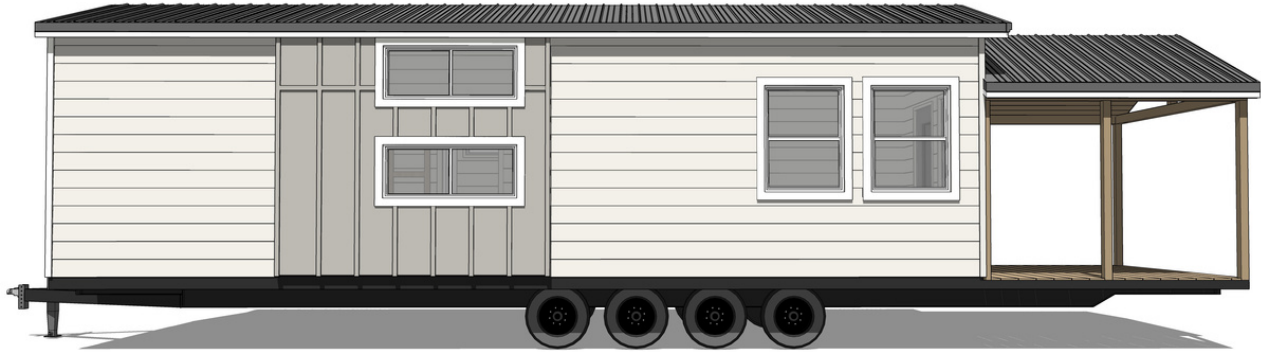
## CUMBERLAND + LOFT

35 ft park model tiny home with loft and 10 ft integrated porch. Certified Park Model RV.



# THE CUMBERLAND

35 ft park model tiny home with 10 ft integrated porch.  
Certified Park Model RV.





# THE CUMBERLAND

35 ft park model tiny home with 10 ft integrated porch.  
Certified Park Model RV.

## Overview

35ft Tiny Home on Wheels with 10ft integrated porch on entry end (45ft total length). Master on main. Certified Park Model RV.

## Dimensions

12' W x 35' L x 14' H

12' W x 35' L x 15' H – Cumberland + Loft

## Build platform

Bumper pull with quad axle. Purpose-built steel chassis, painted, trailer brakes, highway lighting, DOT approved.

## Roof

Tuff-Rib metal roof, 29 gauge. Multi-pitch gable roofline.

## Sheathing

ZIP System water resistant sheathing panels with ZIP Tape joints.

## Siding

LP SmartSide painted lap siding. Board and batten siding on bump-outs. Benjamin Moore satin exterior paint.

## Integrated deck

Gable roofline extended over 10' pressure treated deck with ceiling fan. Pressure treated corner posts, no railings.

## Power hookup

100 amp hookup. 2 exterior outlets.

## Water system/plumbing

Fresh water hose inlet and onboard pressure reducer. 1/2" Wirsbo expansion PEX & fittings used throughout. Exterior garden hose bib.

## Hot water heater

20 gal tanked electric water heater.

## Heating/cooling

Ductless dual-head mini split, A/C & heat pump, 18,000 BTU.

## Insulation

Walls, ceiling & floor insulated with closed-cell spray foam.

## Walls

Painted 7" reveal shiplap.

## Ceilings

Stained V-joint tongue & groove or painted shiplap.

## Floors

Waterproof engineered hardwood or luxury vinyl plank.

## Door

Fiberglass door, full-light, no grids.

## Windows

Double paned, low-E vinyl windows. White, no grids.

## Lights/fan

Surface-mounted LED ceiling lights. Three standard ceiling fans with light—living room, bedroom, and integrated porch. Bathroom vanity sconce.

## Living area

Open living area available for your furniture. Outlet & conduit for TV/cable.

## Cabinetry & millwork

Finish-grade plywood cabinet bases and solid wood face frames. Pre-finished drawer boxes with soft-close drawer glides. All doors have soft-close hinges. All trim & millwork is solid wood.

## Kitchen general

Closed lower and upper cabinets with smooth panel doors. Open upper shelving. Solid surface countertop with 3" backsplash. Undermount stainless sink.

## Appliances

3/4 size 24" fridge with top freezer. 24" radiant electric cooktop (or upgrade to a 24" full range). 24" hood vent. 18" built-in dishwasher. Built-in space with outlet for microwave placement (microwave not included). Stacked washer/dryer hookups only.

## Sleeping areas

Two twin-size bunk beds in hallway. Main floor bedroom to fit a queen or king size bed with two floating night stands. Double closets with outlet & conduit for TV/cable in between closets. Wood desktop below TV placement with open space below for luggage storage. Cumberland + Loft includes 110 sq ft sleeping loft.

## Bathroom general

60" fiberglass one-piece shower insert. 30" vanity base with solid surface top. Vent fan. Gravity flush toilet, white, round bowl with slow close seat. Pocket door access.

# THE TELLICO

---



**45ft**  
Modern  
tiny home

**4 people**  
Sleeps  
up to

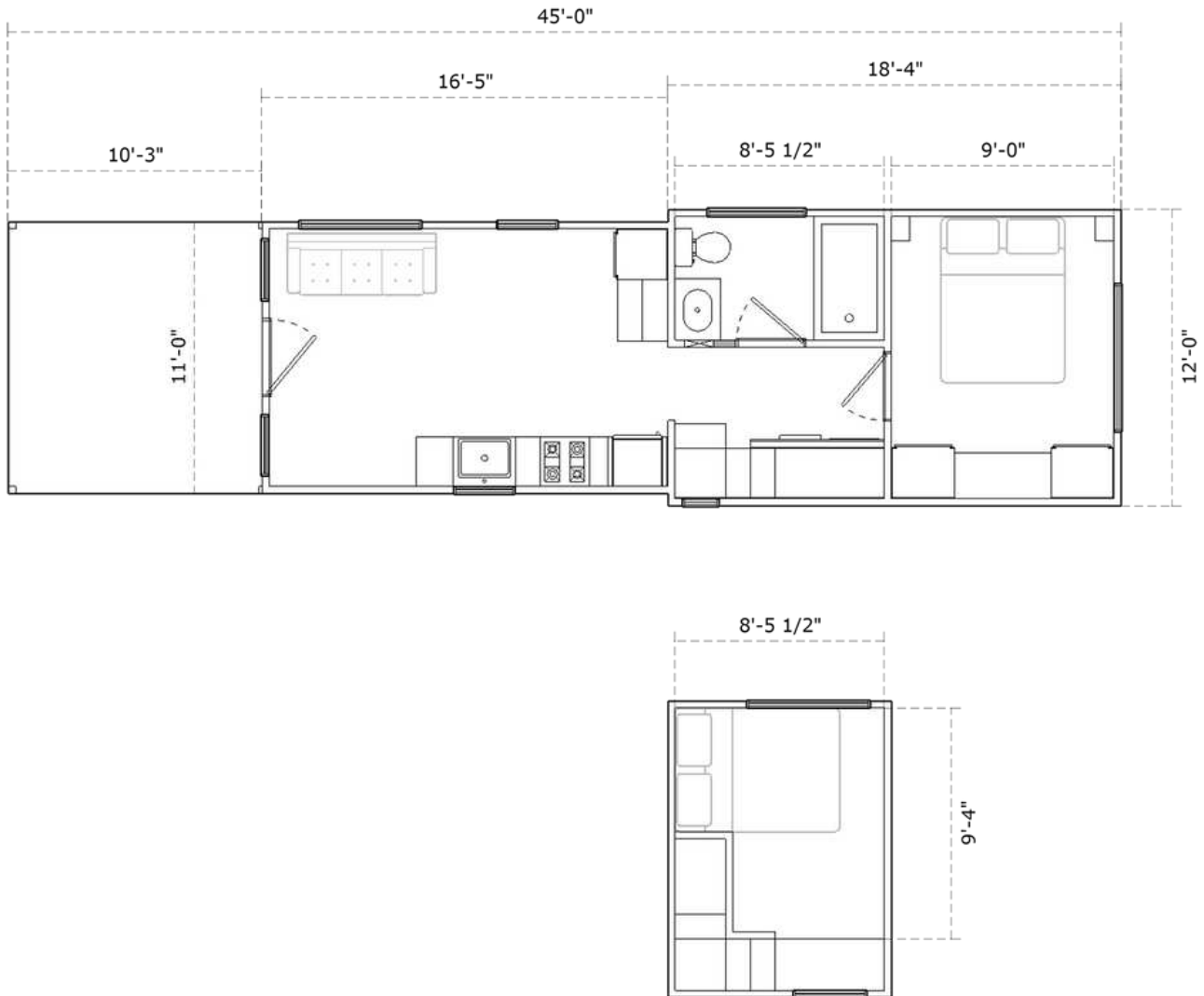
**MSRP: \$150,000**  
\*Volume discounts  
available



# THE TELLICO

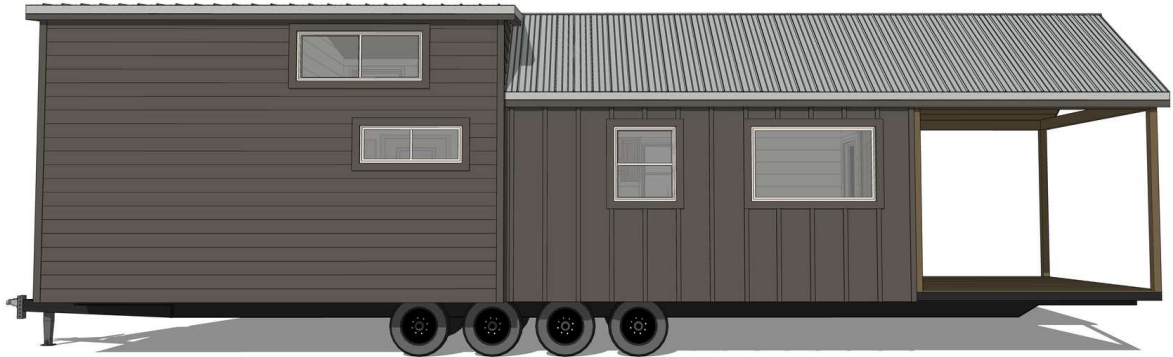
35 ft park model tiny home with 10 ft integrated porch.  
Certified park model RV.

The Tellico Park Model is a thoughtful lofted design that prioritizes comfort while maximizing sleeping capacity. The home features an open concept kitchen and living area, main floor bedroom with built-in closets, loft with stairs and standing-height platform entry, full bathroom, and laundry area. A 10' integrated porch provides covered entry and extends the living area outside. Ideal as a family or couples getaway, the Tellico offers versatility in a compact yet comfortable design.



# THE TELLICO

35 ft park model tiny home with 10 ft integrated porch.  
Certified park model RV.







# THE TELLICO

35 ft park model tiny home with 10 ft integrated porch.  
Certified park model RV.

## Overview

35 ft Tiny Home on Wheels with 10 ft integrated porch on the entry end (45 ft total length). Master on main. Certified Park Model RV.

## Dimensions

12' W x 35' L x 15' H

## Build platform

Bumper pull with quad axle. Purpose built steel chassis, painted, trailer brakes, highway lighting, DOT approved.

## Roof

Tuff-Rib metal roof, 29 gauge. Gable & low-pitch gable roofline.

## Sheathing

ZIP System water resistant sheathing panels with ZIP Tape joints.

## Siding

LP SmartSide painted lap siding. Benjamin Moore, satin exterior paint.

## Integrated deck

Gable roofline extended over 10' pressure treated deck with ceiling fan. Pressure treated corner posts, no railings.

## Power hookup

100 amp hookup. 2 exterior outlets.

## Water system/plumbing

Fresh water hose inlet and onboard pressure reducer. 1/2" Wirsbo expansion PEX & fittings used throughout. Exterior garden hose bib.

## Hot water heater

20 gal tanked electric water heater.

## Heating/cooling

Ductless dual-head mini split, A/C & heat pump, 18,000 BTU.

## Insulation

Walls, ceiling & floor insulated with closed-cell spray foam.

## Walls

Painted 7" reveal shiplap.

## Ceilings

Stained V-joint tongue & groove or painted shiplap.

## Floors

Waterproof engineered hardwood or luxury vinyl plank.

## Door

Fiberglass door, full-light, no grids.

## Windows

Double paned, low-E vinyl windows. White, no grids.

## Lights/fan

Surface-mounted LED ceiling lights. Three standard ceiling fans with light—living room, bedroom, & integrated porch. Bathroom vanity sconce.

## Living area

Open living area available for your furniture. Outlet & conduit for TV/cable.

## Cabinetry & millwork

Finish-grade plywood cabinet bases and solid wood face frames. Pre-finished drawer boxes with soft-close drawer glides. All doors have soft-close hinges. All trim & millwork is solid wood.

## Kitchen general

Closed lower and upper cabinets with smooth panel doors. Open upper shelving. Solid surface countertop with 3" backsplash. Undermount stainless sink.

## Appliances

3/4 size 24" fridge with top freezer. 24" radiant electric cooktop (or upgrade to a 24" full range). 24" hood vent. 18" built-in dishwasher. Built-in space with outlet for microwave placement (microwave not included). Side-by-side front-loading washer/dryer hookups only.

## Sleeping areas

Main floor bedroom to fit a queen or king size bed with two floating night stands. Double closets with outlet & conduit for TV/cable in between closets. Lower half of one closet contains hot water heater. Wood desktop below TV placement with open space below for luggage storage. 6' x 9' sleeping loft with storage stair access for queen or double size bed.

## Bathroom general

60" fiberglass one-piece shower insert. 30" vanity base with solid surface top. Vent fan. Gravity flush toilet, white, round bowl with slow close seat. Pocket door access.

# THE PISGAH

---



**45ft**  
Modern  
tiny home

**4 people**  
Sleeps  
up to

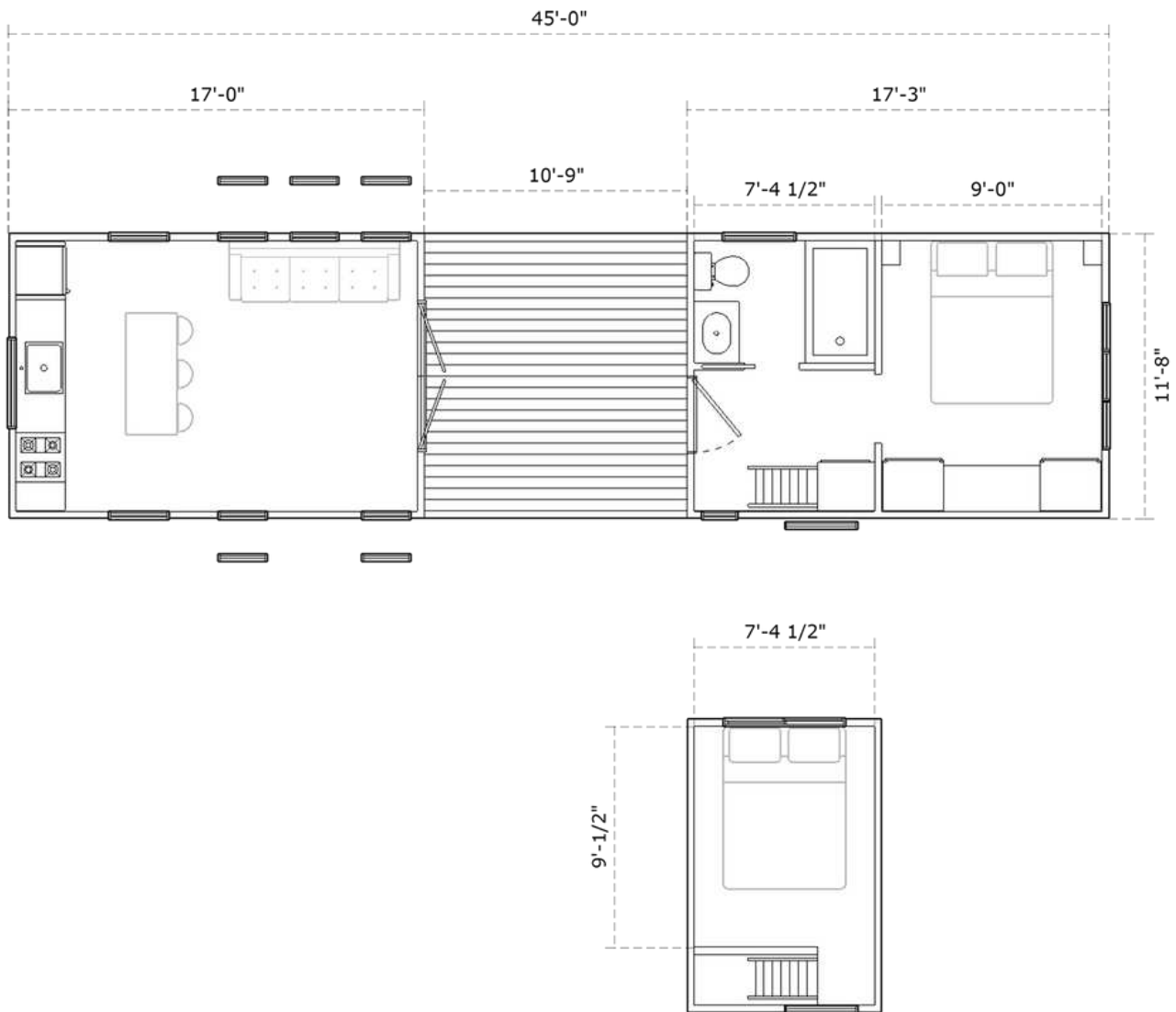
**MSRP: \$155,000**  
\*Volume discounts  
available



# THE PISGAH

Split 35 ft park model tiny home with 10 ft integrated porch. Certified park model RV.

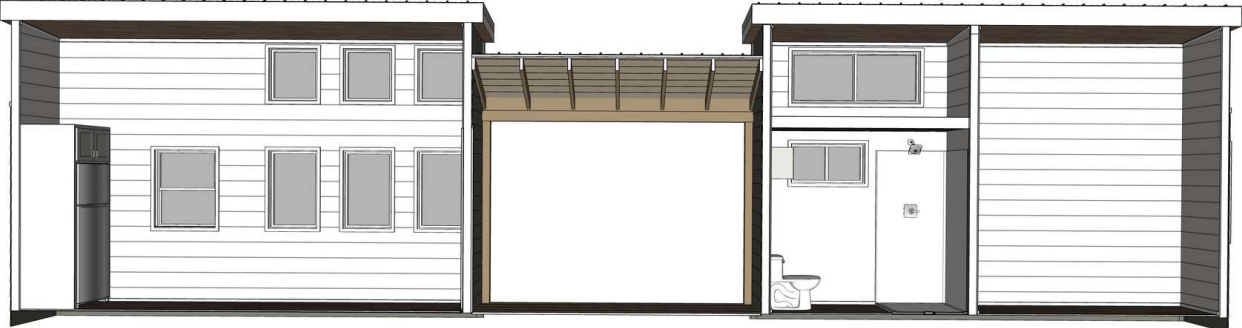
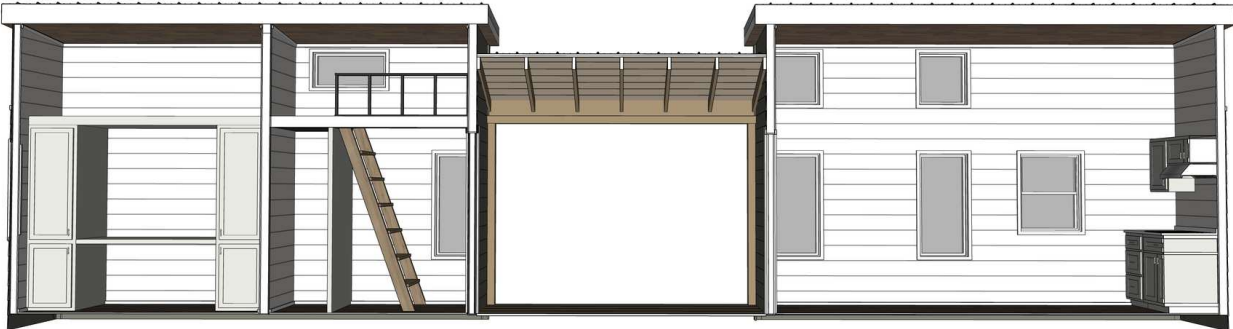
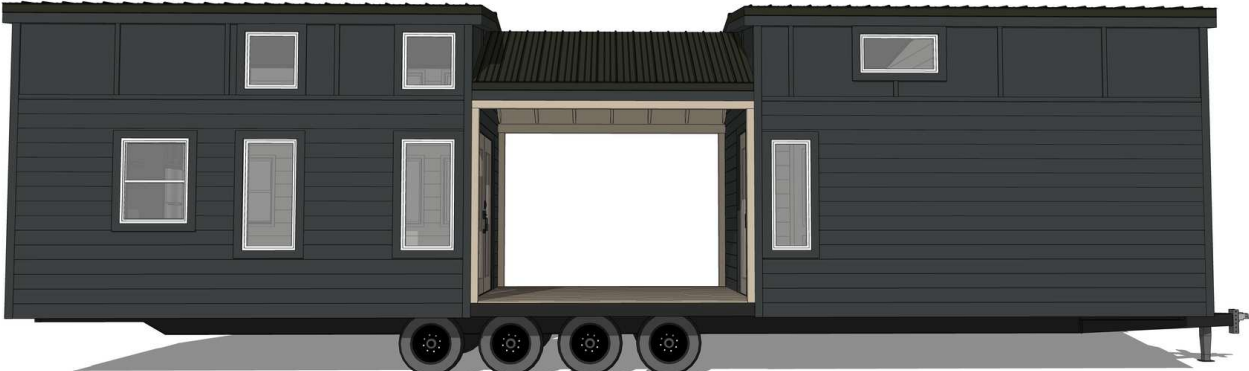
The Pisgah Park Model is a unique split design with open kitchen and living area on one side, and bedroom, full bath, and sleeping loft with easy-climb ladder access on the other. It also features built-in closets and a laundry area. The 10' integrated porch connects the two sides and extends the living area outdoors. Offering an uncommon getaway experience, the Pisgah stands apart from the competition.



# THE PISGAH



Split 35 ft park model tiny home with 10 ft integrated porch. Certified park model RV.





# THE PISGAH

Split 35 ft park model tiny home with 10 ft integrated porch. Certified park model RV.

## Overview

35 ft Tiny Home on Wheels with 10 ft integrated porch in middle of the home (45 ft total length). Master on main. Certified Park Model RV.

## Dimensions

12' W x 35' L x 15' H

## Build platform

Bumper pull with quad axle. Purpose-built steel chassis, painted, trailer brakes, highway lighting, DOT approved.

## Roof

Tuff-Rib metal roof, 29 gauge. Multi-pitch gable roofline.

## Sheathing

ZIP System water resistant sheathing panels with ZIP Tape joints.

## Siding

LP SmartSide painted lap siding. Board and batten siding around top of home. Benjamin Moore, satin exterior paint.

## Integrated deck

Gable roofline over integrated 10' pressure treated deck with ceiling fan. No railings.

## Power hookup

100 amp hookup. 2 exterior outlets.

## Water system/plumbing

Fresh water hose inlet and onboard pressure reducer. 1/2" Wirsbo expansion PEX & fittings used throughout. Exterior garden hose bib.

## Hot water heater

20 gal tanked electric water heater.

## Heating/cooling

Ductless dual-head mini split, A/C & heat pump, 18,000 BTU.

## Insulation

Walls, ceiling & floor insulated with closed-cell spray foam.

## Walls

Painted 7" reveal shiplap.

## Ceilings

Stained V-joint tongue & groove or painted shiplap.

## Floors

Waterproof engineered hardwood or luxury vinyl plank.

## Door

Fiberglass door, full-light, no grids.

## Windows

Double paned, low-E vinyl windows. White, no grids.

## Lights/fan

Surface-mounted LED ceiling lights. Three standard ceiling fans with light—living room, bedroom, & integrated porch. Bathroom vanity sconce.

## Living area

Open living area available for your furniture. Outlet & conduit for TV/cable.

## Cabinetry & millwork

Finish-grade plywood cabinet bases and solid wood face frames. Pre-finished drawer boxes with soft-close drawer glides. All doors have soft-close hinges. All trim & millwork is solid wood.

## Kitchen general

Closed lower and upper cabinets with smooth panel doors. Open upper shelving. Solid surface countertop with 3" backsplash. Undermount stainless sink.

## Appliances

3/4 size 24" fridge with top freezer. 24" radiant electric cooktop (or upgrade to a 24" full range). 24" hood vent. 18" built-in dishwasher. Built-in space with outlet for microwave placement (microwave not included). Stacked washer/dryer hookups only.

## Sleeping areas

Main floor bedroom to fit a queen or king size bed with two floating night stands. Double closets with outlet & conduit for TV/cable in between closets. Lower half of one closet contains hot water heater. Wood desktop below TV placement with open space below for luggage storage. 6' x 9' sleeping loft with storage stair access for queen or double size bed.

## Bathroom general

60" fiberglass one-piece shower insert. 30" vanity base with solid surface top. Vent fan. Gravity flush toilet, white, round bowl with slow close seat. Pocket door access.

# MODERN TRADITIONAL



## Exterior Palette



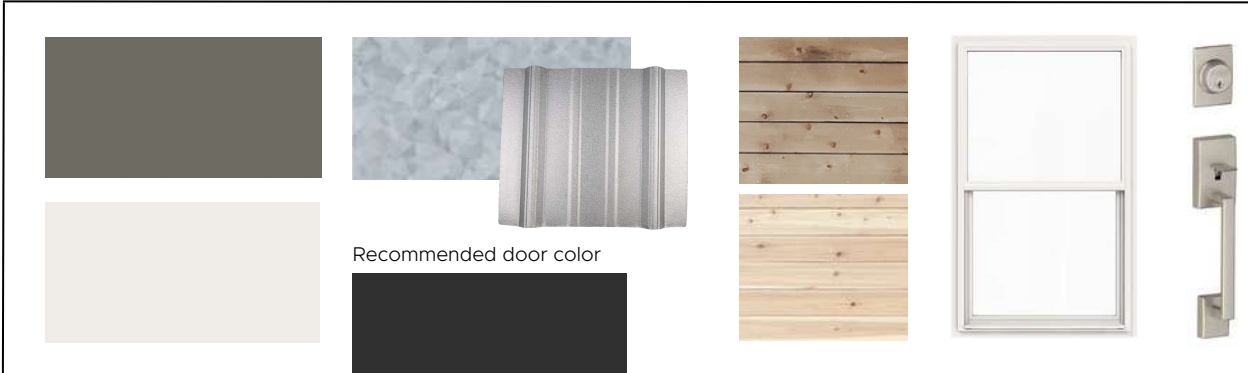
## Pebble Gray Exterior



## Classic White Exterior



## Storm Green Exterior



## Warm Wood Interior



## Light Wood Interior



# MODERN CABIN



## Exterior Palette



## Woodsy Bronze Exterior



## Classic Black Exterior



## Forest Green Exterior





## Dark Wood Interior



## Light Wood Interior



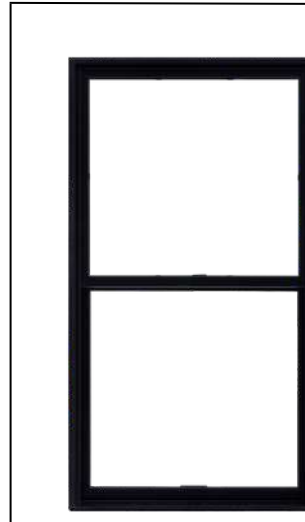
# UPGRADE OPTIONS



## Exterior Porch Railings



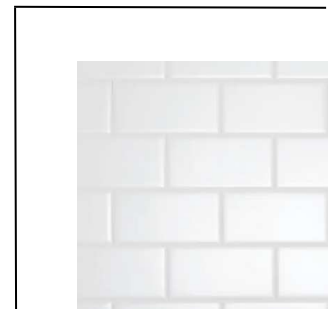
## Black Windows



## 12 x 24" Tile Shower Surround



## Tile Backsplash



## 24" Electric Range



## Bedside Lights







[info@windrivertinyhomes.com](mailto:info@windrivertinyhomes.com)

423-206-2890

[www.windrivertinyhomes.com](http://www.windrivertinyhomes.com)



# ORDER FORM

## Model

---

- The Cumberland
- Cumberland + Loft
- The Tellico
- The Pisgah

## Design

---

### Modern Traditional

#### Exterior Palette

- Pebble Gray
- Classic White
- Storm Green

#### Interior Palette

- Warm Wood
- Light Wood

### Modern Cabin

#### Exterior Palette

- Woodsy Bronze
- Classic Black
- Forest Green

#### Interior Palette

- Dark Wood
- Light Wood

## Upgrades

---

- Custom exterior color palette
- Black window frames
- Exterior porch railings (galvanized grid & painted horizontal steel)
- Custom interior color palette
- 24" Electric Range
- Tile shower surround
- Tile backsplash
- Bedside lights